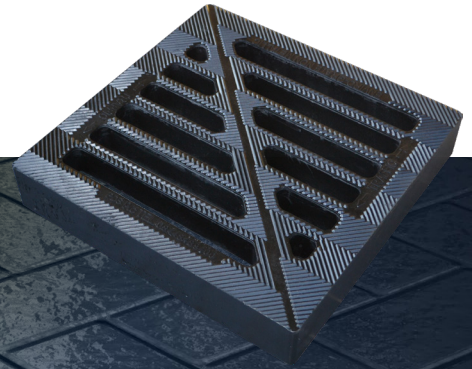
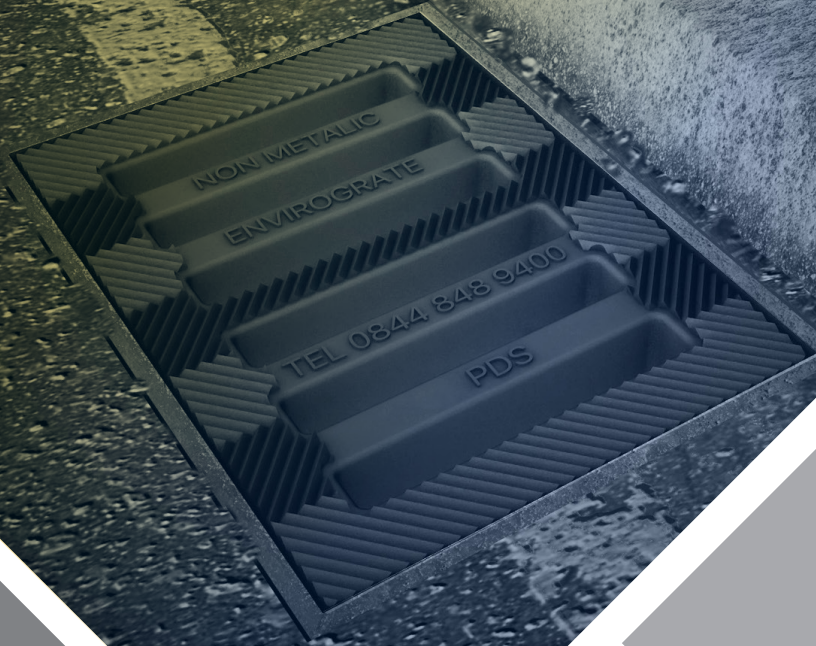
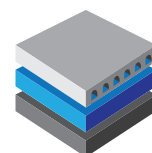


# ENVIROGRATE

The Non-Metallic High Strength  
Grating Replacement Solution



[www.pdsenviro.com](http://www.pdsenviro.com)



**PDS**

SURFACE WATER MANAGEMENT

## ENVIROGRATE BENEFITS



### REDUCED RISK OF THEFT

Envirograte is made from high strength SMC composite material that has no scrap value, so there is no danger of theft. The grate can be sealed in with silicon sealant to further prevent theft or vandalism if required. Fewer thefts mean lower costs for you and less risk for pedestrians and drivers on your roads.



### EASY TO INSTALL

Envirograte is available in a range of sizes - and unlike metal grates there's no need to get an exact match for the manhole opening. Envirograte can be quickly and easily cut to size so it can be taken to site and fitted on location, with no need to replace existing frames. PDS can even manufacture bespoke units to your exact specification.

## ENVIROGRATE RANGE

The widest range of replacement grating available in the UK

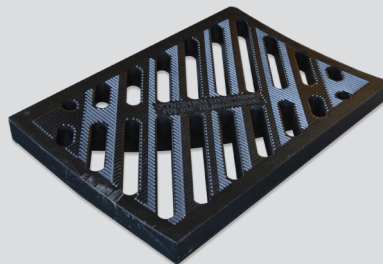
### ENVG CANON B

500x597x130



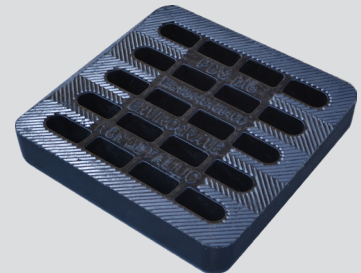
### ENVG NG

600x400x45



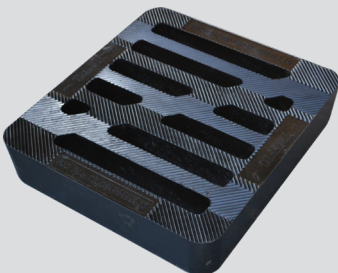
### ENVG 18/18

475x475x80



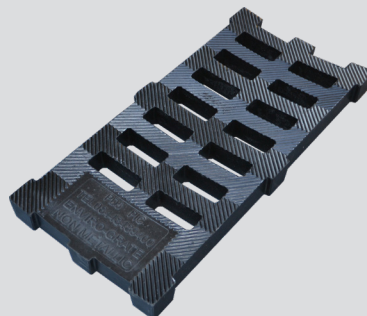
### ENVG 20/18

496x450x100



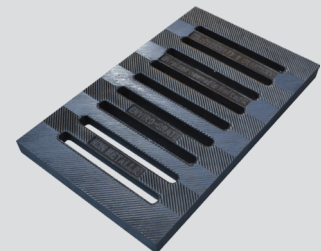
### ENVG MDR

605x289x38



### ENVG NG

740x450x50



# ENVIROGRATE BENEFITS



## LIGHTWEIGHT

Envirograte is made from a composite material which is considerably lighter than traditional concrete or metal materials. The weight falls within the limit for one-man handling.



## STRONG

The gratings are designed to take the weight of heavy goods vehicles and are suitable for use on all roads including those subject to heavy traffic.

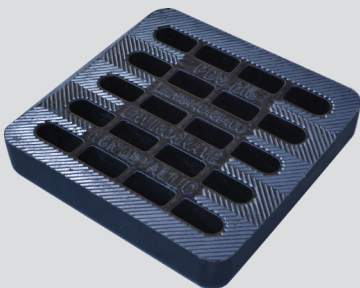
**The Envirograte range meets the requirements of BS EN 124:2015**

**PDS HAVE THE WIDEST RANGE OF REPLACEMENT COMPOSITE GRATING AVAILABLE IN THE UK**

# ENVIROGRATE RANGE

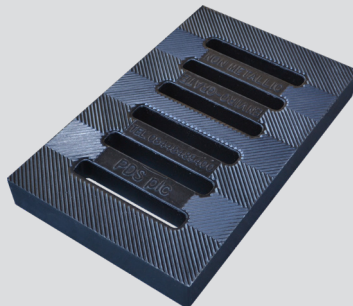
## ENVG EC45/EC65

550x340x45/65



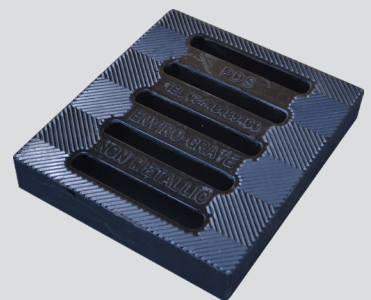
## ENVG ST

394x340x65



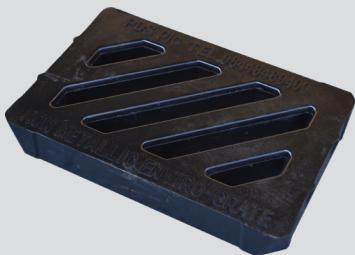
## ENVG BG

365x365x85



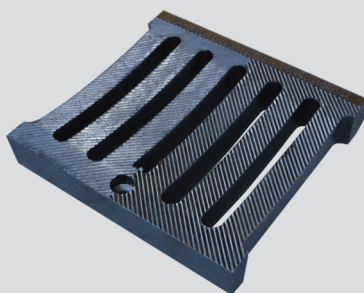
## ENVG MP

445x300x65



## ENVG HG

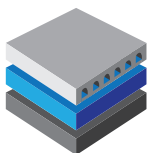
408x404x71



## ENVG B

385x235x70





**PDS**

SURFACE WATER MANAGEMENT

**PDS**

Cavendish House, Unit 1 Enterprise 36,  
Tannersley, Barnsley, S75 3DZ, UK

**Tel: +44 (0) 844 848 9400**

**Fax: +44 (0) 844 848 9401**

[www.pdsenviro.com](http://www.pdsenviro.com)